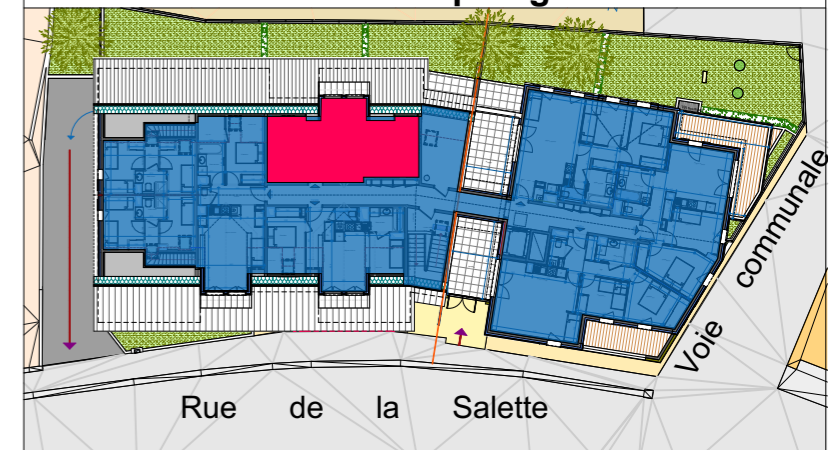




## 204 - 2 pièces R+2 côté montagne

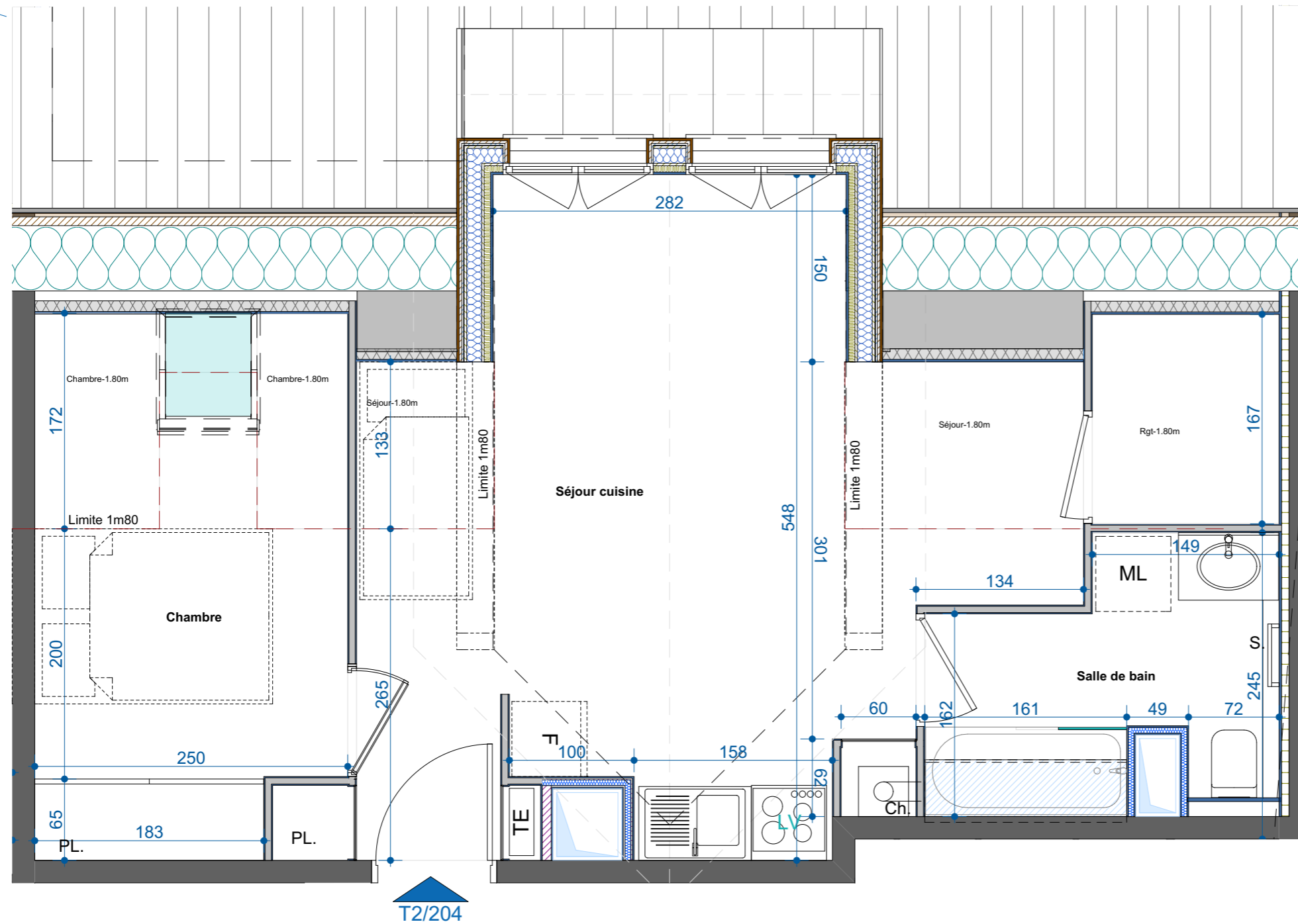
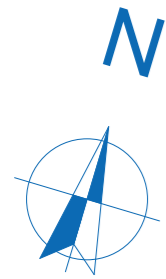
### Plan de repérage



### Tableau des surfaces

Séjour cuisine	19,98
Chambre	7,15
Salle de bain	5,18
<b>TOTAL :</b>	<b>32,31 m<sup>2</sup></b>
Rgt-1.80m	2,50
Séjour-1.80m	2,54
Séjour-1.80m	1,47
Chambre-1.80m	1,24
Chambre-1.80m	1,72
<b>TOTAL -1,80m :</b>	<b>9,47 m<sup>2</sup></b>

Surface utile: 41,78 m<sup>2</sup>



T2/204

