



106 - 3 pièces R+1+2 côté montagne

Plan de repérage

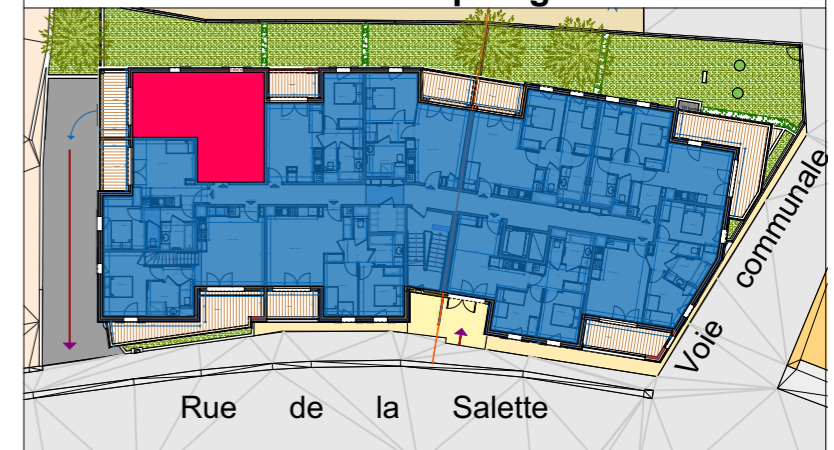
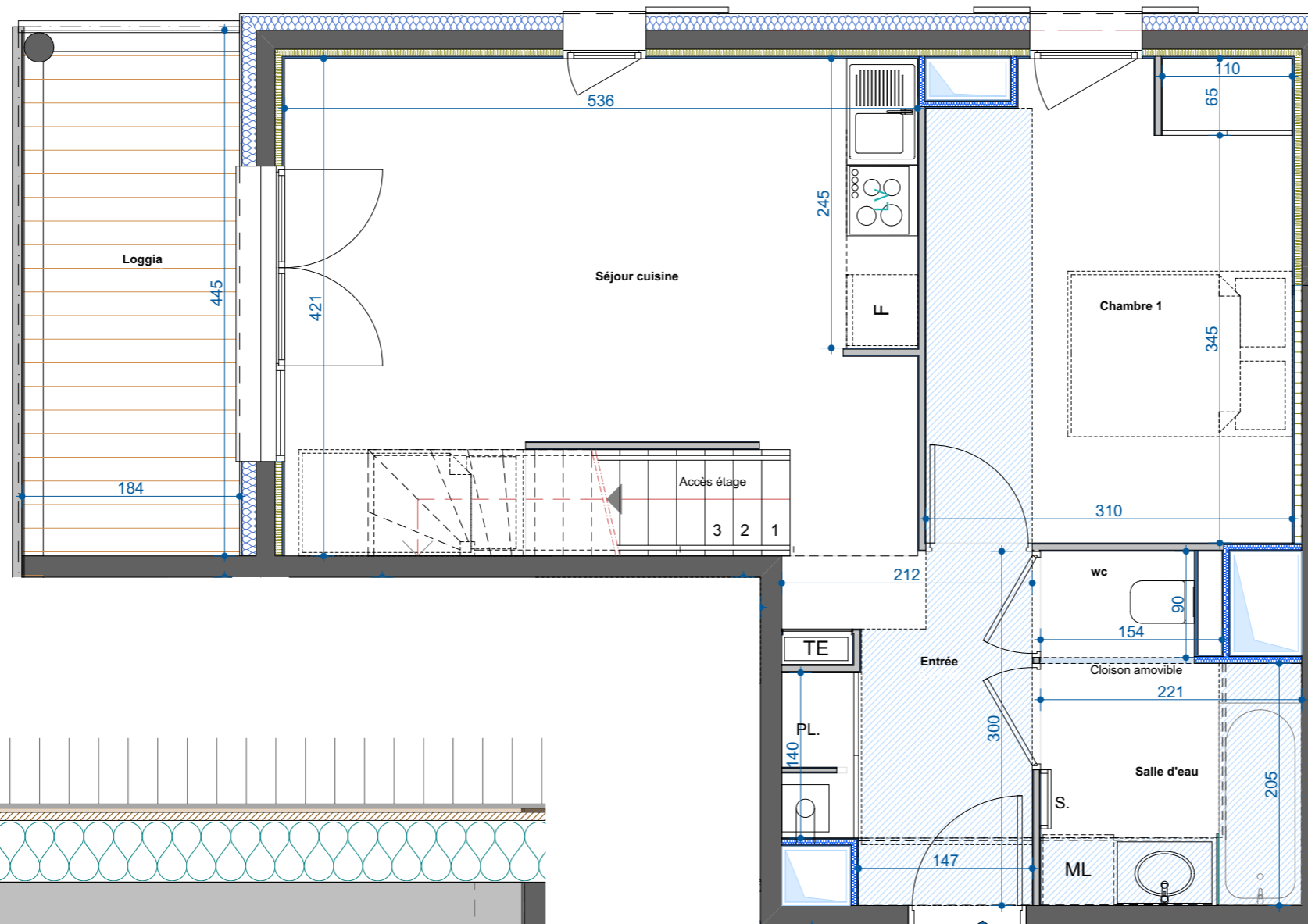
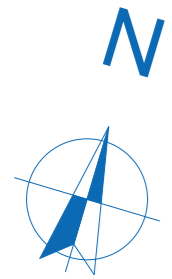


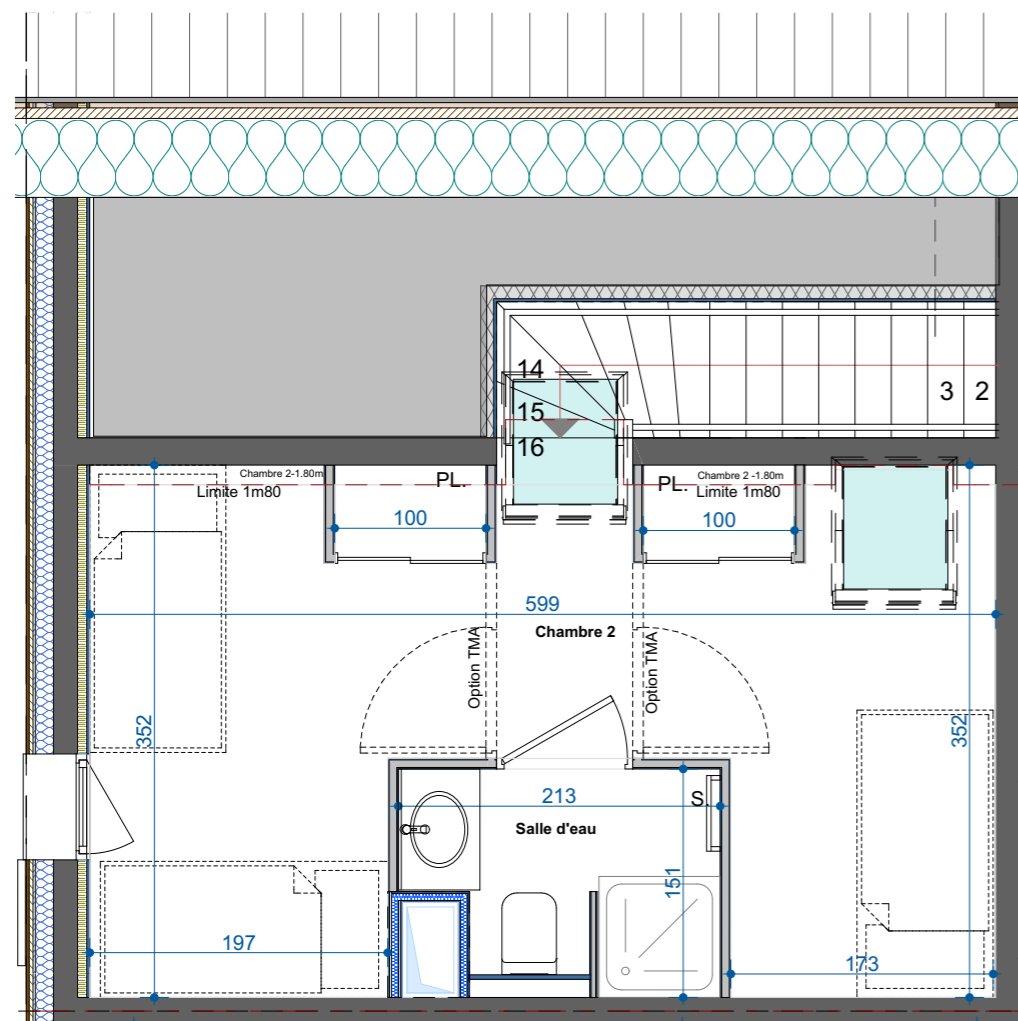
Tableau des surfaces

R+1	Entrée	5,67
	Séjour cuisine	20,36
	Chambre 1	12,34
	Salle d'eau	4,53
	wc	1,38
	TOTAL R+1:	44,28 m²
	Loggia	8,19
R+2	Chambre 2	16,65
	Salle d'eau	2,85
	TOTAL R+2:	19,50 m²
	Chambre 2 -1.80m	0,16
	Chambre 2-1.80m	0,34
	TOTAL -1,80m :	0,50 m²
	TOTAL R+1+2:	63,78 m²

Surface utile: 64,28 m²



R+1



R+2

